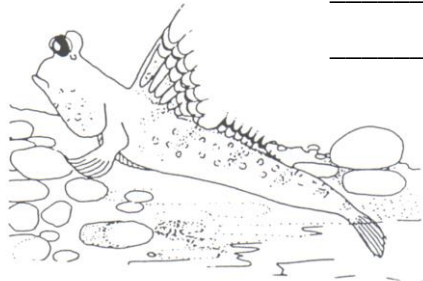


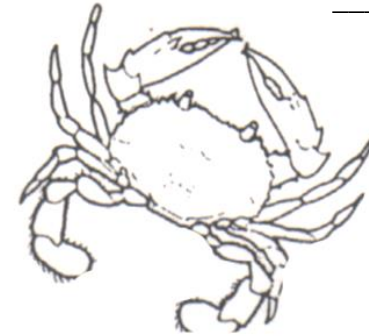
IDENTIFICATION

With the help of your guide, identify each of the following animals and write down something interesting about them.



4







5

Where Mangroves are found

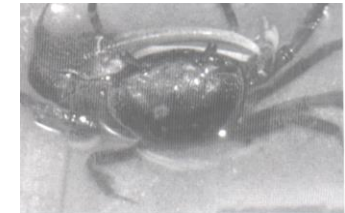
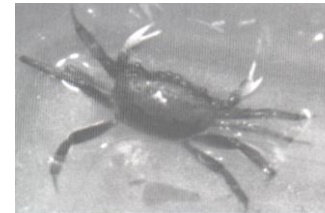
An Estuary is that part of the river which meets with the sea and is open to the sea through the river mouth. It is here that fresh and salt water mix. Read the following statements and circle the most correct answer.

1. Estuaries are valuable areas because:
 - a) Mangrove trees grow there and provide food
 - b) many small fish and aquatic animals are protected there
 - c) they are flat and muddy and provide nutrients
2. Which of these three characteristics are important for a mangrove area to develop?
 - a) warm salt water temperatures
 - b) a river bank where there is fresh water only
 - c) A sheltered area which is tidal
3. The area where mangrove trees like to grow is
 - a) always covered by salt water
 - b) sometimes covered by salt water and sometimes by less salty water
 - c) an area with plenty of water and oxygen

Fiddler Crabs

Fiddler crabs live in the mangroves, and one can identify the male by his large claw, where as the female has two small claws. If you turn them over and look at their underside, the females have a 'U' shaped carapace, while the males have a 'V' shaped carapace.

Looking at the pictures below, which is male and which is female?

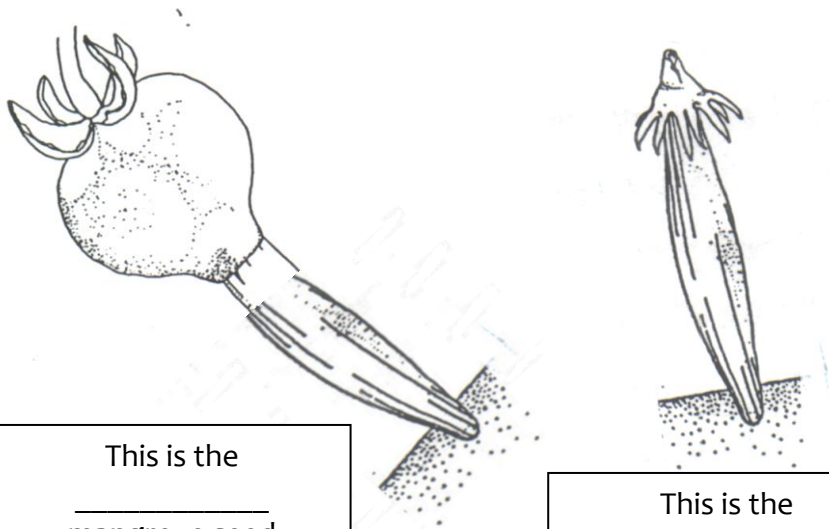


1. What are some of the reasons why it would be good for a male fiddler crab to have a really big claw?

2. What disadvantage would there be to having a big claw?

Mangrove Seeds

The black and red mangroves hold the seed on the tree until it is quite well developed; when the seed falls it sticks into the mud and starts to grow quickly. These seedlings like to grow in shade.



This is the _____ mangrove seed

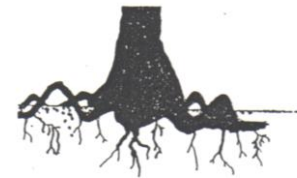
This is the _____ mangrove seed

The white mangrove is well adapted as a Primary colonizer because the seedlings like to grow in the sun and become firmly rooted almost immediately after they settle. The majority of the fruit falls at the highest of spring tides, the equinox, and therefore get spread over a large area.

Mangrove trees

There are three common types of mangrove trees in South Africa. With the help of your guide, see if you can match up the names, pictures and characteristics.

Red Mangrove – White Mangrove – Black mangrove
 Pencil roots – Knee Roots – Stilt Roots
 Put excess salt into one leaf – Put excess salt into all the leaves



Name: _____
 Root Type: _____
 Dealing with excess salt:



Name: _____
 Root Type: _____
 Dealing with excess salt:



Name: _____
 Root Type: _____
 Dealing with excess salt:

Draw a picture of your favorite Mangrove animal

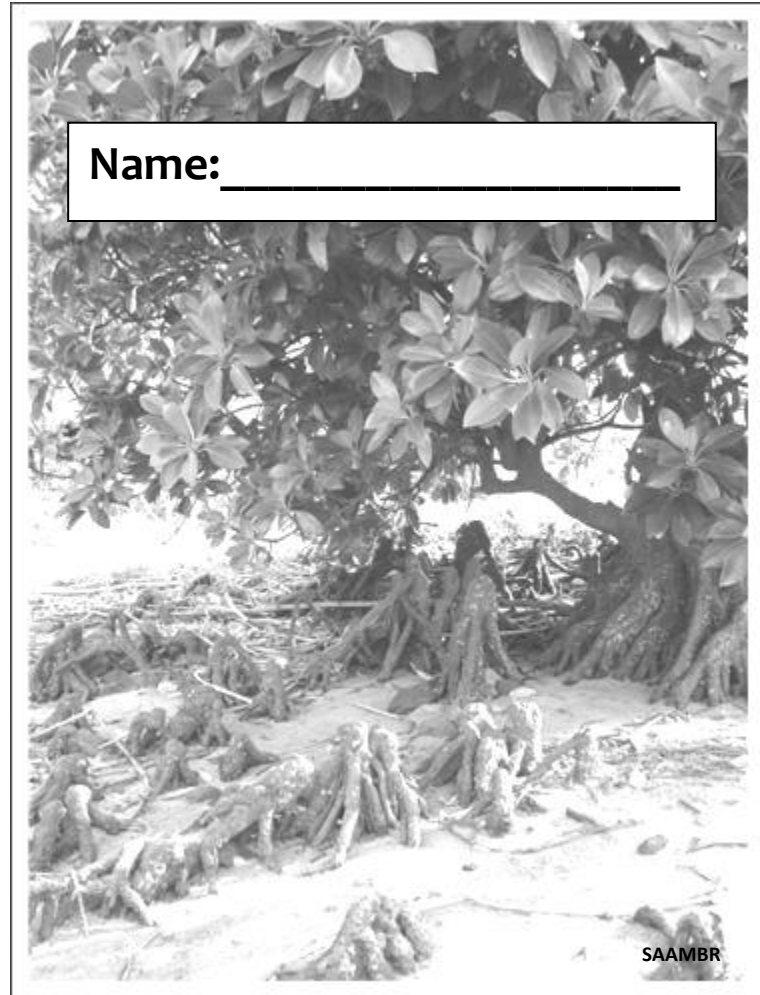
- What other animals live with it?
- How does it get its food?
- How does it protect itself?

Beachwood Mangroves



Helping people to care for our ocean

Name: _____



SAAMBR